

Sophisticated information and mail center management.

PC Solutions



HASLER

For instant use of real-time data of stored data at any time.

The System 77 is the most sophisticated information management system available, and will let you take real control of your mail processing. It is designed for Windows® NT, 2000 or XP. System 77 provides accurate, real-time information management with unlimited reporting capability! Ideal for sophisticated mail and shipping centers in company offices, or among mail centers across the country. And it's perfect for production mail centers.

The System 77 employs existing software and communication structures. The System 77 will interface with many devices that handle paper such as mail machines, copiers, bursters, inserters and more. It should find an application in virtually any accountable process.

Because the System 77 can be interfaced to a variety of equipment, you can work with your existing equipment or choose equipment that's right for your specific environment.

The System 77 accounting terminal is an exclusive, full-color, touch-screen, Internet-ready, networkable PC. Global software will consolidate accounting information from up to 9,999 units using your existing network connections so you can communicate across the room, across the street, and across the country.



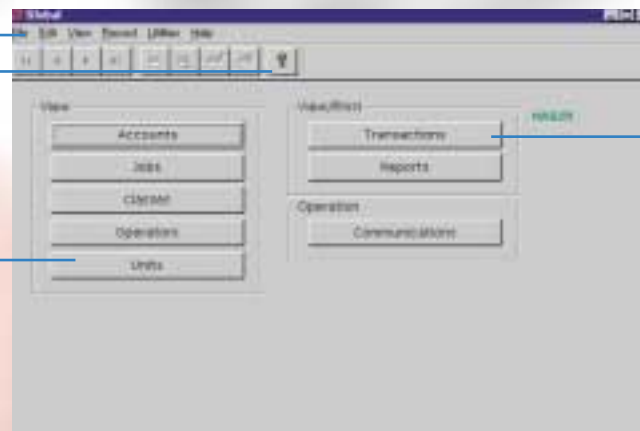
What you get with System 77:

- LAN/WAN, peer-to-peer networking
- Compatibility with Novell Networks
- Touch-screen, graphical user interface
- Unlimited reporting capability
 - user-defined reports
 - reports include 3-D charts
 - design your own with Crystal Reports
- For postage accounting, chargeback information is sent via your network in a variety of formats including Word, Excel, Lotus, ODBC, ASCII and HTML for posting as an Intranet web page
- Ability to search for and display your current jobs on screen, with real-time data, from your desktop

Use up to 72 digits for the account number



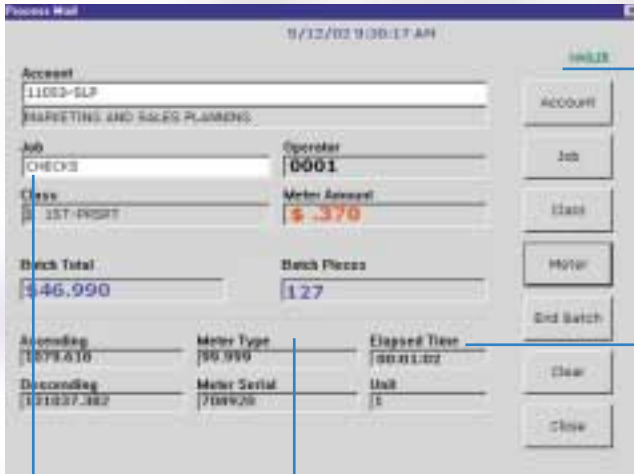
Pull-down menus provide easy access to all commands



On-line help guides you through all commands

Buttons instantly let you view and modify databases

or manipulation



Large, easy-to-read touch-screen interface

The system is able to record each mailpiece processed along with complete operator and machine productivity

Both Job and Account fields are verifiable

Complete ascending and descending postage funds information shows accounts for each meter on the network, identified by the meter serial number

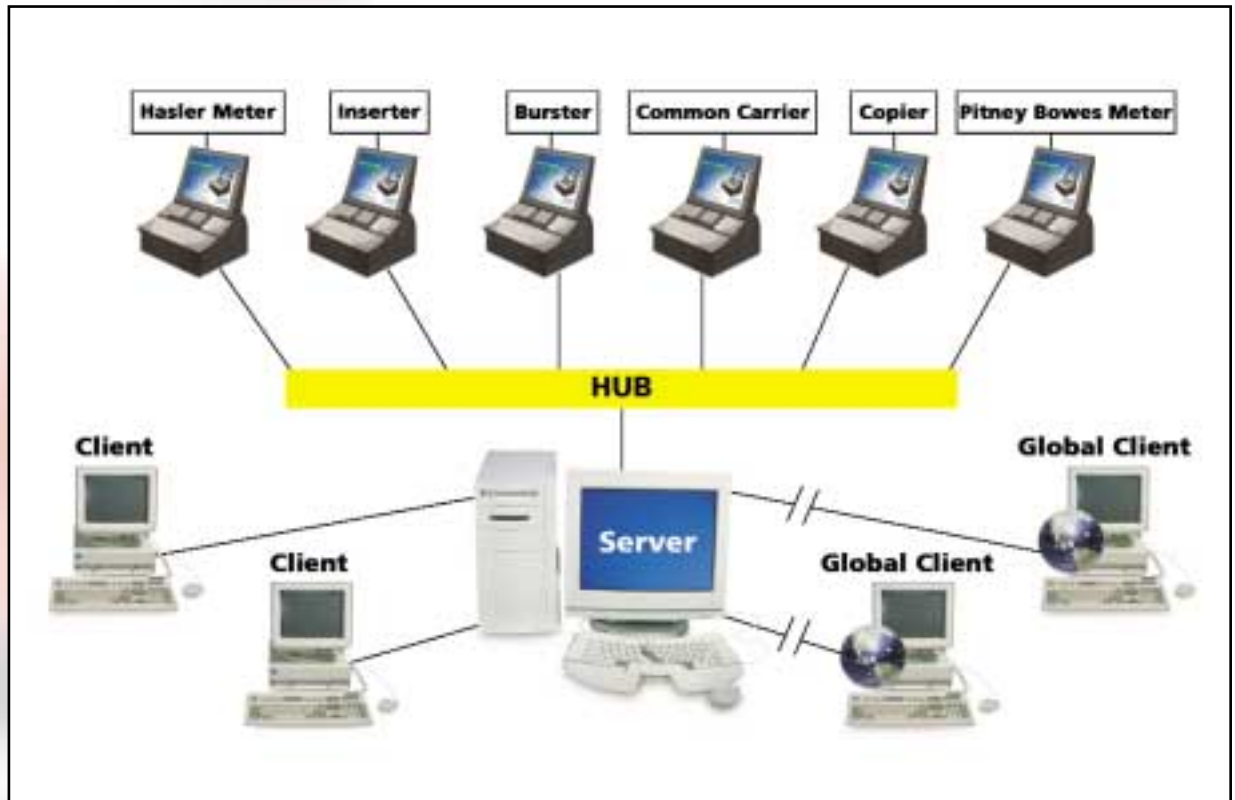
Save reports in various file types:

- Microsoft Excel
- Lotus
- Microsoft Word
- HTML
- ASCII Fixed Length and Delimited
- Character Separated Values, Comma-Separated (CSV)
- Tab Separated Text and Values
- Rich Text Format
- Crystal Reports (RPT)

System can be interfaced with up to three meters (inserter application only)

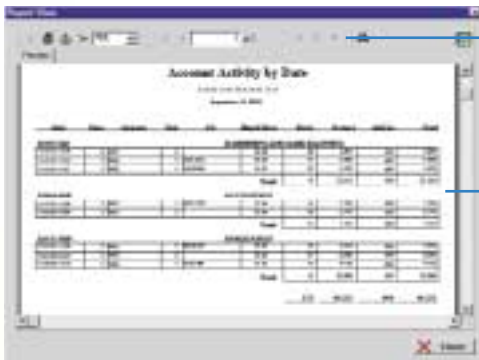
Individual and batch postage and pieces are shown for each meter along with overall batch postage and piece totals

Transactions and reports can be viewed or printed at the touch of a button



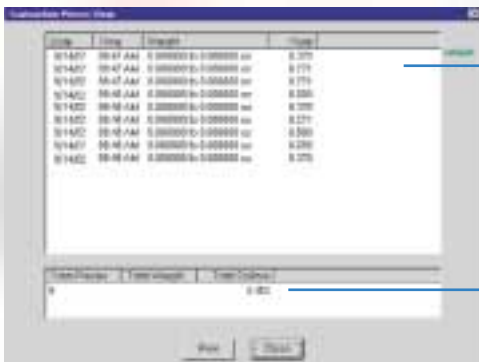
System 77 LAN configuration

Take control of your mail information management.



Buttons let you scroll through pages of your report

Save reports in native file formats such as Excel, Word, Lotus, and HTML. Many others are also supported



Can record the rate, date and time of each piece processed through the system

Creates subtotals for pieces in dollars for time period queried



Hasler's Meter Mate™ module allows the monitoring of metered funds

Meter Mate provides reports on when the meter was filled, the amount it was filled with, and who filled it

Specifications

Space-saver Pentium 700 or faster PC with 10" color LCD screen

128 MB of RAM

10 GIG+ Hard Drive

Windows® 98 SP2

Network Interface Card (NIC)

LPT Printer Port

CDRW

2 USB ports

3 Serial Ports

Hasler Products and Services

- Mailing Systems
- Folding and Inserting
- Postal Scales
- Mail Center Management
- Postal Accounting
- Mail Sorting and Tracking
- Service and Supplies

For a demonstration, more information or a variety of funding options to quickly and easily finance your new equipment, please contact your local Hasler dealer, or call **800/243-6275**. Fax: 203/929-6084. Email: info@haslerinc.com

Hasler® Inc.
Mailing Systems and Solutions
www.haslerinc.com

HASLER

America's better choice.™

Hasler® Inc. is the new name of Ascom Hasler Mailing Systems® Inc.

An ISO 9001 Quality System
Certified company.



Hasler's network of independent dealers provides sales, service and support throughout North America. All names, products and services are trademarks or copyrights of their respective holders.